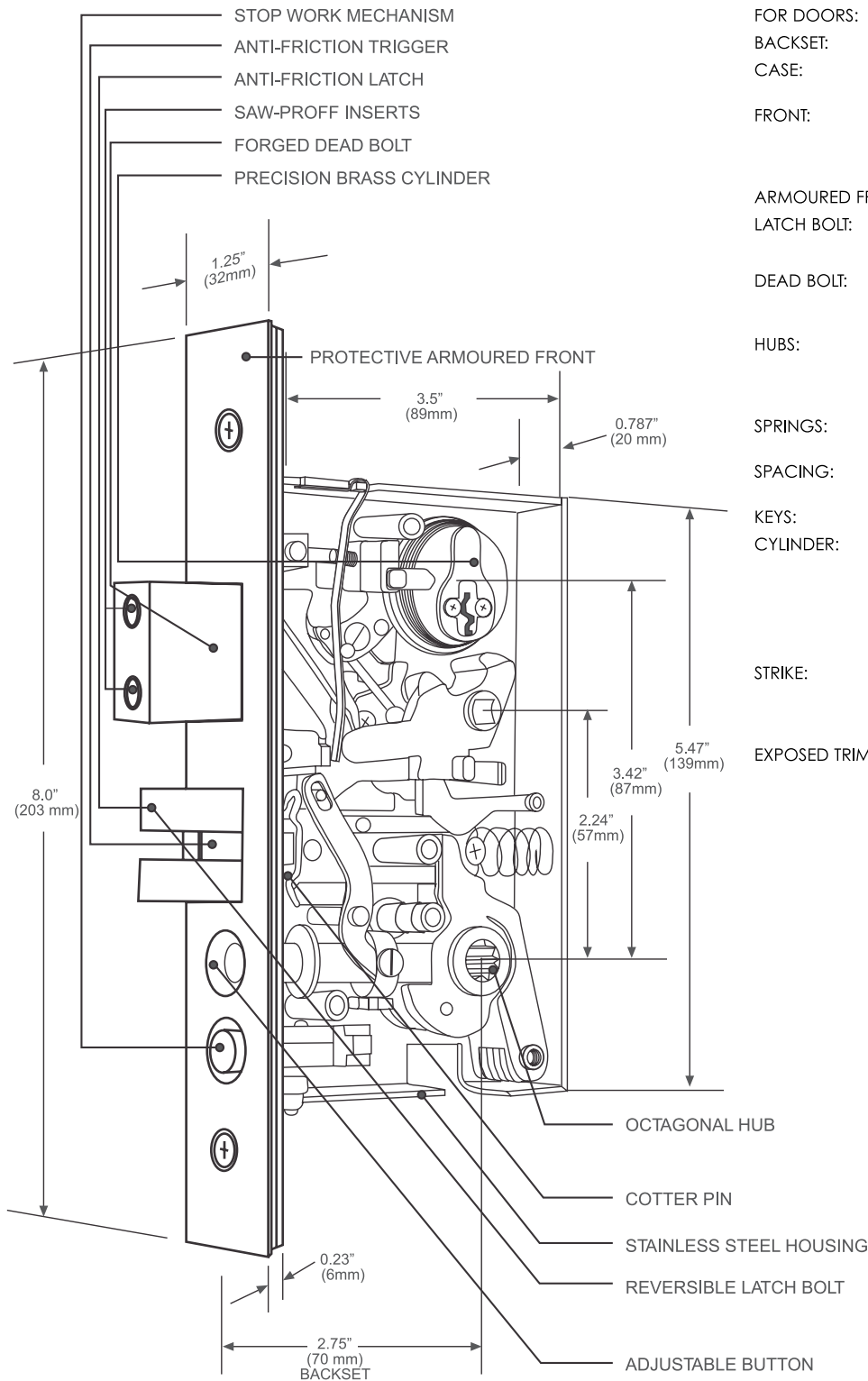


# HEAVY DUTY MORTISE SPECIFICATIONS

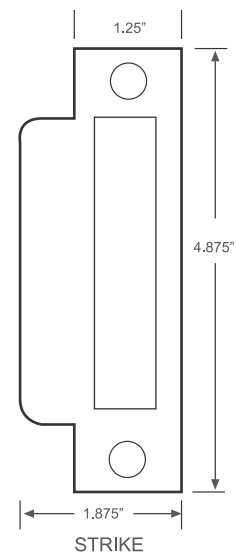
## HD-M10 SERIES (THRU-BOLTED ROSE)



### SPECIFICATIONS



FOR DOORS:	1.37"(35mm) to 1.77" (45mm) thick.
BACKSET:	2 3/4" (70mm)
CASE:	Stainless steel, 5.47" x 3.5" x 0.787" (139 x 89 x 20mm)
FRONT:	Forged brass, 8" x 1.25" x 0.218" (203 x 32 x 6mm) Adjustable for beveled conditions from flat to 0.125" in 2" (3mm in 51mm) bevel, either hand.
ARMoured FRONT:	Brass, Polished
LATCH BOLT:	Forged brass antifriction, 0.625" x 1" (16 x 25mm), 0.75 " (1-19mm) throw. Reversible.
DEAD BOLT:	Forged brass, 0.5" x 1.181" (13 x 30mm) 1" (25mm) throw with two saw-proof hardened steel inserts.
HUBS:	Forged brass, 0.315" (8 mm) with two way rotation. Broached on the octagon & diamond, one-way rotation or strength function.
SPRINGS:	Stainless steel, compression and coiled torsion.
SPACING:	C. to C. Lever hub to cylinder, 3.42" (87mm) C. to C. Lever to turn piece, 2.24" (57mm)
KEYS:	Two, brass.
CYLINDER:	Solid brass, 5-6 pin tumbler SCHLAGE 'C' keyway with straight cam. Can be Keyed Different, Keyed Alike, Masterkeyed & Grand Masterkeyed. Accepts standard 1 - 5/32" diameter, threaded round mortise
STRIKE:	Brass, Polished. 4.875" x 1.25 x 0.093" (124 x 32 x 2.4mm) Curved lip (not handed) and special length strikes available
EXPOSED TRIMS:	Forged brass, Polished



Listed for 3 hours fire rated.



NOTE: STRAIGHT CAM ONLY IS USED FOR HEAVY DUTY MORTISE

# HEAVY DUTY MORTISE SPECIFICATIONS

## HD-M10 SERIES (THRU-BOLTED ROSE)



### SPECIFICATIONS

Outside	Inside	Series Function	Type	ANSI No.	Function Description
		<b>M1010</b>	<b>Passage or Closet</b>	F01	Latchbolt operated by lever from either side at all times.
		<b>M1040</b>	<b>Privacy or Bathroom</b>	F02/F19	Latchbolt operated by lever from either side except when turnpiece projects deadbolt and locks outside lever. Unlocked by turning inside lever, (simultaneously retraction) or by using emergency key from the exterior side which retracts the deadbolt.
		<b>M1050</b>	<b>Office or Entry</b>	F04	Latchbolt operated by lever from either side except when outside lever is made inoperative by push button rocker. When outside lever is locked, latchbolt may be retracted by key from outside or by rotating inside lever. ***Auxiliary deadbolt latch.
		<b>M1053</b>	<b>Entrance</b>	F11/F12	Latchbolt operated by lever from either side except when outside lever is made inoperative by push button rocker. Deadbolt projected by key from outside and by thumbturn from inside. Deadbolt retracted by key from outside. Both bolts retracted by inside lever (simultaneous retraction) ***Auxiliary deadbolt latch.
		<b>M1056</b>	<b>Apartment/Corridor</b>	F13	Latchbolt operated by lever from either side. Deadbolt projected by key from outside and thumbturn from inside. Rotating inside lever retracts both bolts (simultaneous retraction) Extended deadbolt automatically deadlocks latchbolt.
		<b>M1060</b>	<b>Vestibule</b>	F09	Latchbolt operated by lever from either side except when outside lever is locked by inside key. Outside key or inside lever will retract latch when locked. ***Auxiliary deadbolt latch.
		<b>M1070</b>	<b>Classroom</b>	F05	Latchbolt operated by lever from either side except when outside lever is locked from outside by key. When outside lever is locked, latchbolt may be retracted by inside lever, or outside lever, when cylinder is unlocked by key. ***Auxiliary deadbolt latch.
		<b>M1080</b>	<b>Storeroom or Closet</b>	F07	Latchbolt operated by key from outside or by rotating inside lever. Outside lever is always inoperative. ***Auxiliary deadbolt latch.
		<b>M1081</b>	<b>Storeroom</b>	F14	Latchbolt operated by lever from either side. Deadbolt by key on either side.
		<b>M1085</b>	<b>Hotel or Motel</b>	F15	Latchbolt operated by key from outside or by rotating inside lever. Outside lever is always inoperative Deadbolt operated by thumbturn from inside which shuts out all keys except emergency key. Inside lever will retract both bolts (simultaneous retraction). ***Auxiliary deadbolt latch.
		<b>D185</b>	<b>Single Dummy</b>	-	Fixed single dummy lever
		<b>D190</b>	<b>Double Dummy</b>	-	Fixed double dummy lever

### COMPARISON CHART

FUNCTION	LINEAR M10 SERIES	ANSI NO.	ARROW B SERIES	CORBIN/ RUSSWIN	SARGENT 7700/8100	SCHLAGE L SERIES	P.D.Q. ML SERIES	YALE
Passage	M1010	F01	B01	2210	13	L9010	126	8701
Privacy	M1040	F02/F19	B02	2220	65	L9040	176	8702
Office	M1050	F04	B22	2251	5	L9050	116	8707
Entrance	M1053	F11/F12	B11	2267	45	L9453	156	8767
Apartment Corridor	M1056	F13	B19	2265	25	L9456	136	8722
Vestibule	M1060	F09	B32	2242	16	L9060	127	8717
Classroom	M1070	F05	B17	2255	37	L9070	148	8708
Storeroom or Closet	M1080	F07	B12	2257	4	L9080	115	8705
Storeroom	M1081	F14	B31	2222	26	L9466	137	8760
Hotel	M1085	F15	B15	2229	50	L9485	161	8720

Mortise stocked in 2 3/4" Back-set. 2 1/2" Back-sets available as custom order only.



# HEAVY DUTY MORTISE SPECIFICATIONS

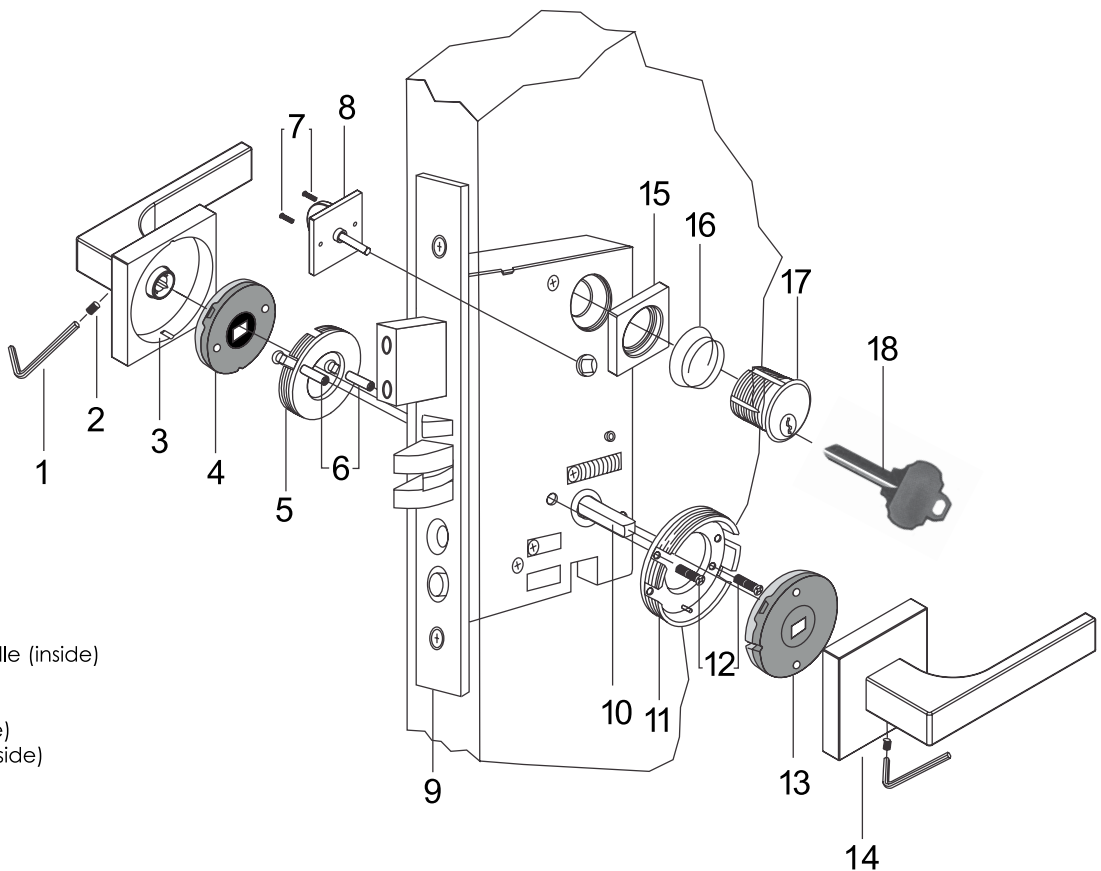
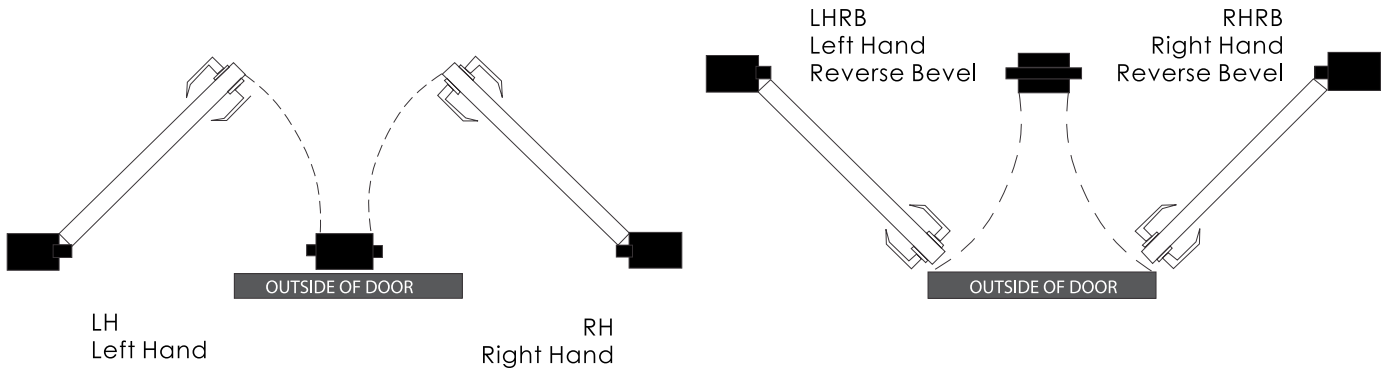
## HD-M10 SERIES (THRU-BOLTED ROSE)



### SPECIFICATIONS

#### GRADE 1 HEAVY - DUTY MORTISE LOCKSET

Handing



1. Allen Key
2. Set Screw (2)
3. Left Hand Lever Handle (inside)
4. Metal Spring (inside)
5. Sub Mounts (inside)
6. Female Screws (inside)
7. Thumbturn Screws (inside)
8. Thumbturn (inside)
9. Mortise Lock
10. Swivel Spindle
11. Sub Mounts (outside)
12. Male Screws (outside)
13. Metal Spring (outside)
14. Right Hand Lever Handle (outside)
15. Cylinder Collar
16. Cylinder Spring
17. Keyed Cylinder
18. Big Bow Key

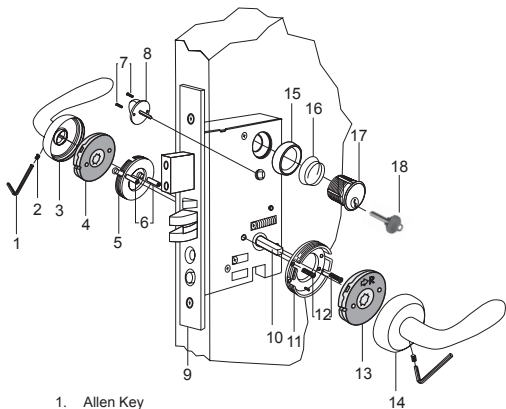
#### Sample Specification for "Robocinque S" Right Hand Entry Mortise in Satin Chrome

ID71HD + M1053 + SATIN CHROME + RH

1. Trim Model #
2. Function
3. Finish
4. Handing

# INSTRUCTION AND TEMPLATE FOR INSTALLING MORTISE LOCK HD - M10 SERIES

## PARTS INCLUDED WITH YOUR NEW MORTISE LOCK WITH 2 3/4" BACKSET



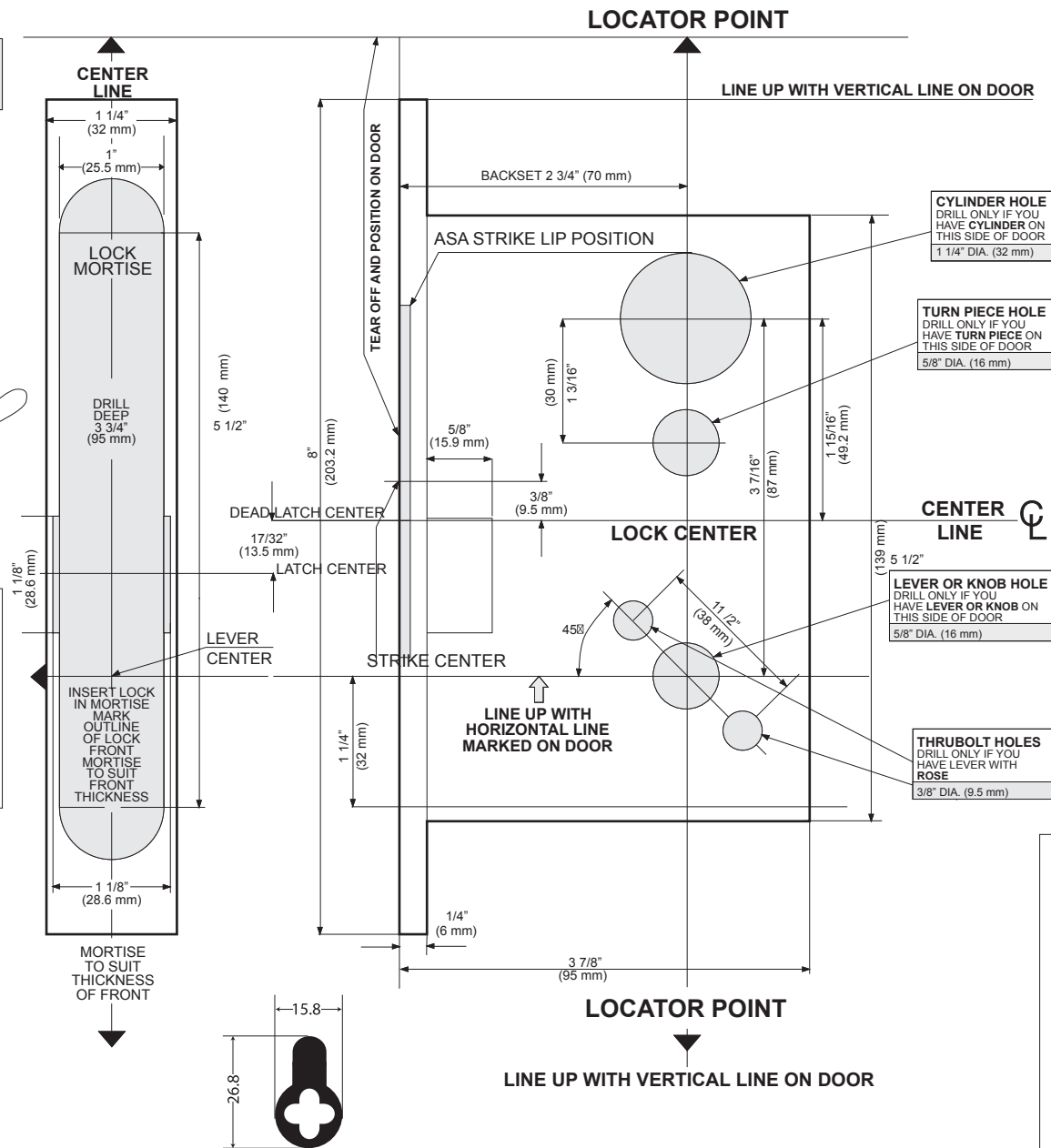
1. Allen Key
2. Set Screw (2)
3. Left Hand Lever Handle (inside)
4. Metal Spring Pack (inside)
5. Sub Mounts (inside)
6. Female Screws (inside)
7. Thumbturn Screws (inside)
8. Thumbturn (inside)
9. Mortise Lock
10. Swivel Spindle
11. Sub Mounts (outside)
12. Male Screws (outside)
13. Metal Spring Pack (outside)
14. Right Hand Lever Handle (outside)
15. Cylinder Collar
16. Cylinder Spring
17. Keyed Cylinder
18. Key

### PLEASE NOTE

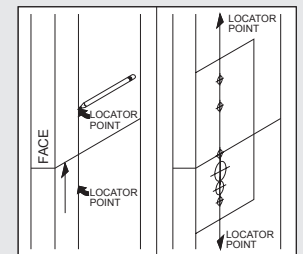


**Metal Springs are handed**  
Handing is indicated with arrow pointing to hinge location, also with either an "R" for right or "L" for Left.

**FOR OPPOSITE SIDE OF DOOR, TURN TEMPLATE OVER**



NOTE: STRAIGHT CAM ONLY IS USED FOR HEAVY DUTY MORTISE



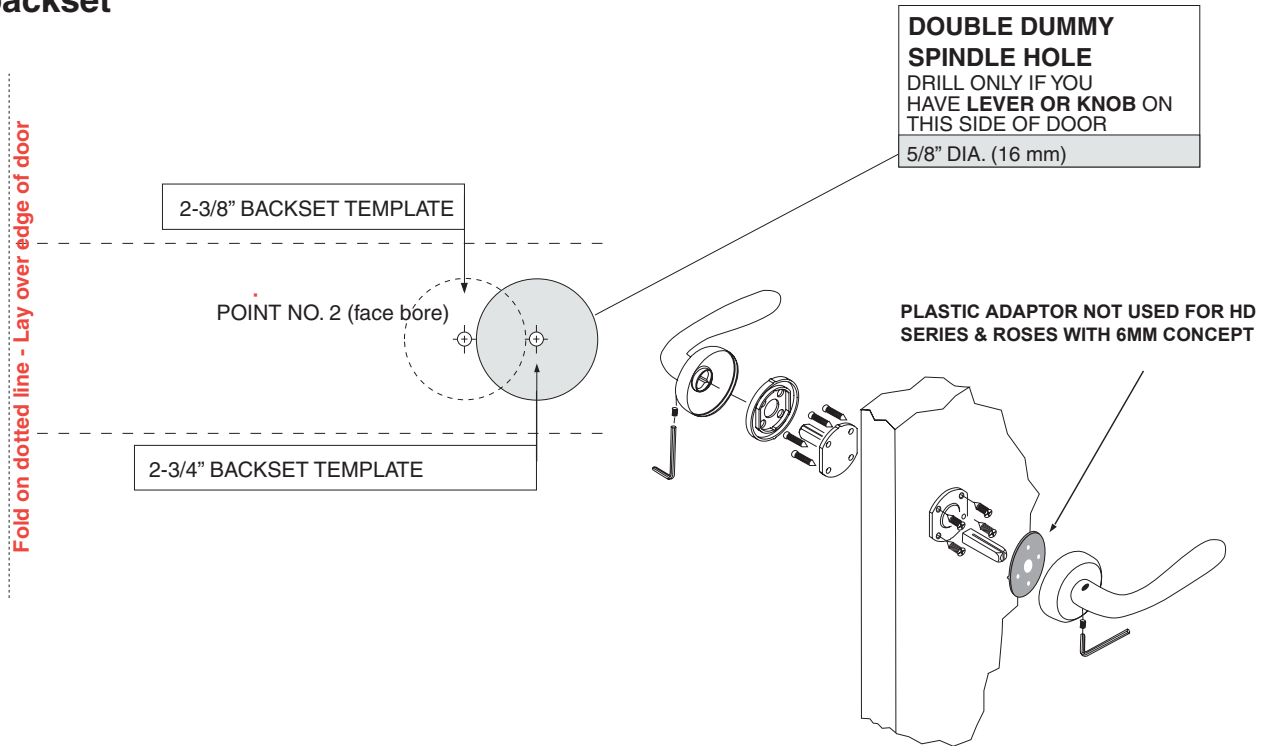
1. Mark door and position template on high side of bevel.  
  
Draw a horizontal line on both sides of door and lock face of door at desired height of lever or knob finished floor line.  
  
Mark 2 locator points on each side of door above and below horizontal line.  
  
Draw vertical line through 2 locator points.  
  
Detach door template and lock face door template.  
  
Position template on outside of door so horizontal center lines up with horizontal line on door and template locator points line up with vertical line on door.  
  
Note: If mortise for strike has already been made in metal frame, position templates using strike mortise as reference. (see template)
2. Position lock face template.
3. Mortise and drill door. Drill holes from each side of door.

## DOOR PREPARATION CHART

Series	Outside				Inside			
	Lever Hole	Cylinder Hole	Turn Knob Hole	Rose Thru-Bolt Hole	Lever Hole	Cylinder Hole	Turn Knob Hole	Rose Thru-Bolt Hole
<b>M10 SERIES</b>								
Function	A	B	C	D	A	B	C	D
M1010	*	*	*	*	*	*	*	*
M1040	*	*	*	*	*	*	*	*
M1050	*	*	*	*	*	*	*	*
M1053	*	*	*	*	*	*	*	*
M1056	*	*	*	*	*	*	*	*
M1060	*	*	*	*	*	*	*	*
M1070	*	*	*	*	*	*	*	*
M1080	*	*	*	*	*	*	*	*
M1081	*	*	*	*	*	*	*	*
M1085	*	*	*	*	*	*	*	*
D190	*	*	*	*	*	*	*	*
D185	*	*	*	*	*	*	*	*

## Template for **DOUBLE DUMMY D190** - non-bored door condition

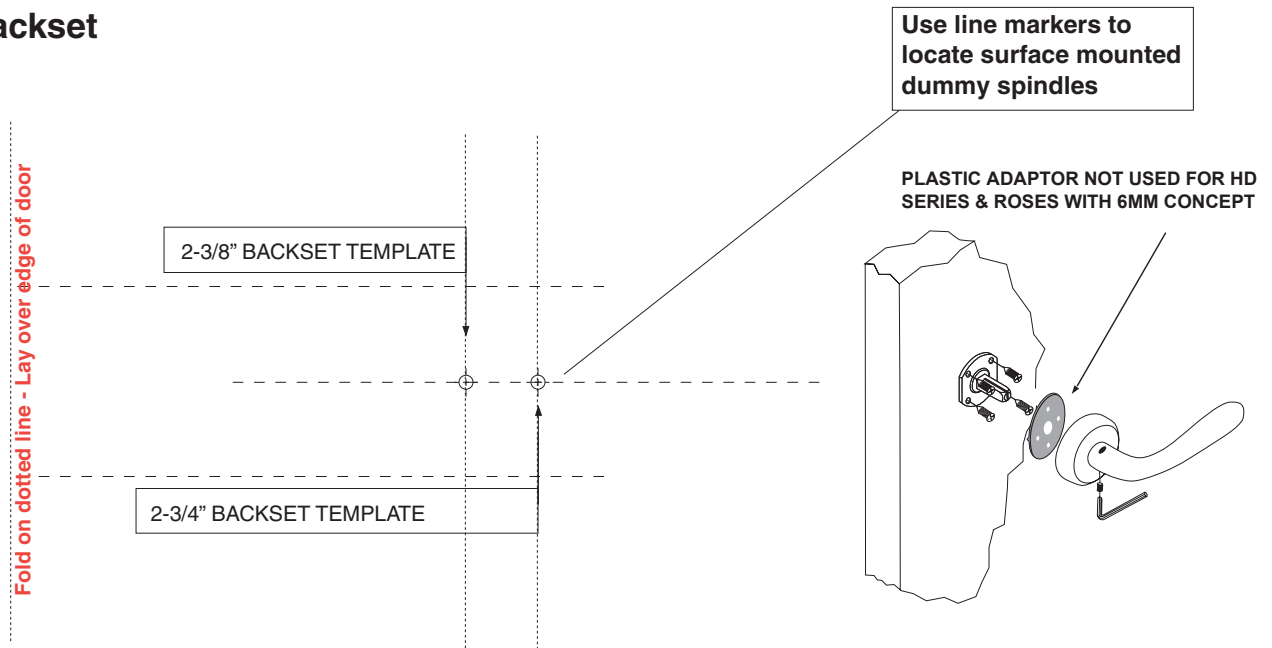
### Determine backset



Template #011A

## Template for **SINGLE DUMMY D185** - non-bored door condition

### Determine backset



Template #011B