

INTER-CONNECTED TUBULAR ENTRY MOUNTING

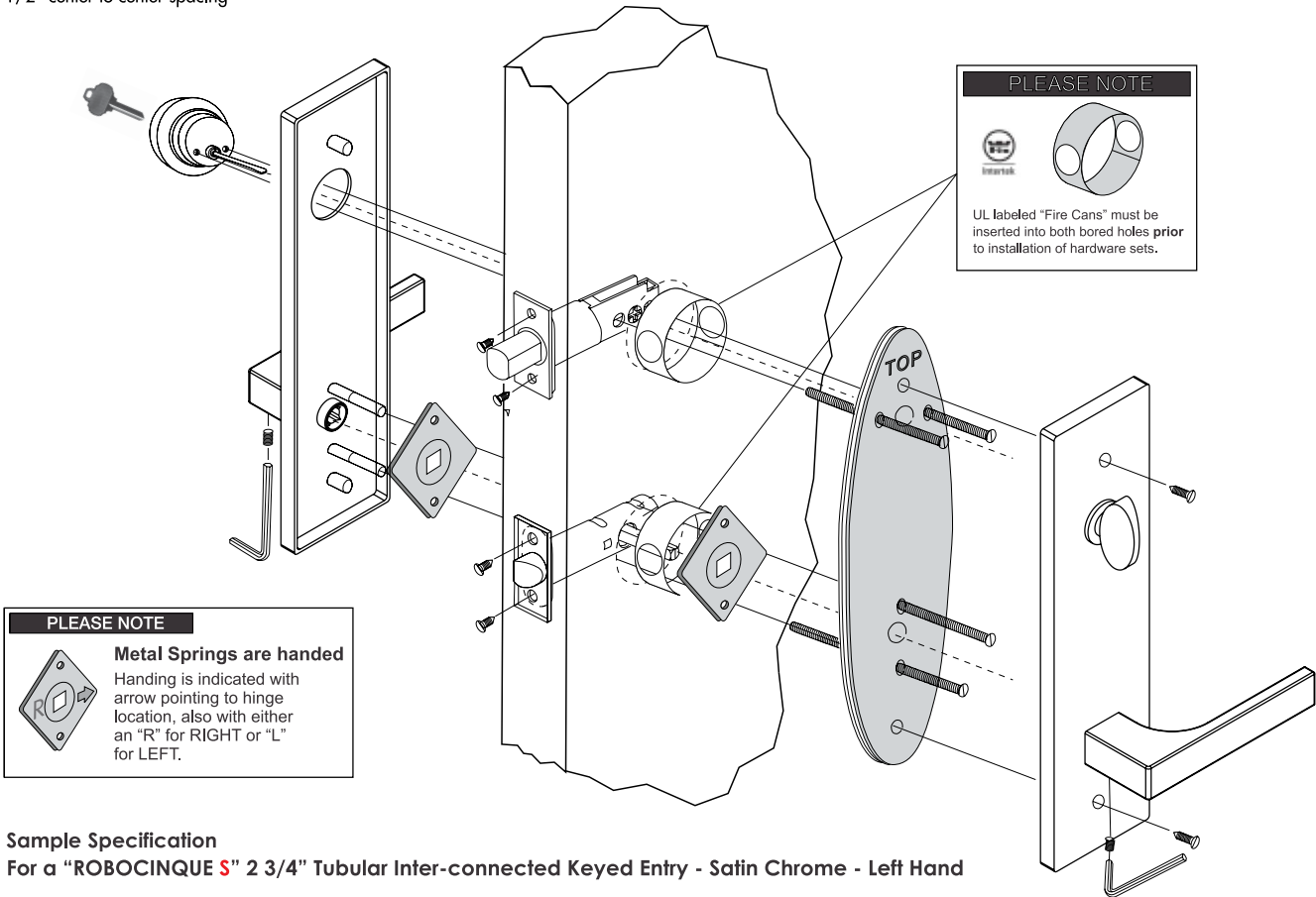
P300 PLATE SERIES



KEYLOCK ENTRY: T150 2³/₈" BACKSET

T151 2³/₄" BACKSET

2 - 2 1/8" holes required
with 5 1/2" center to center spacing



PLEASE NOTE

Metal Springs are handed

Handing is indicated with arrow pointing to hinge location, also with either an "R" for RIGHT or "L" for LEFT.

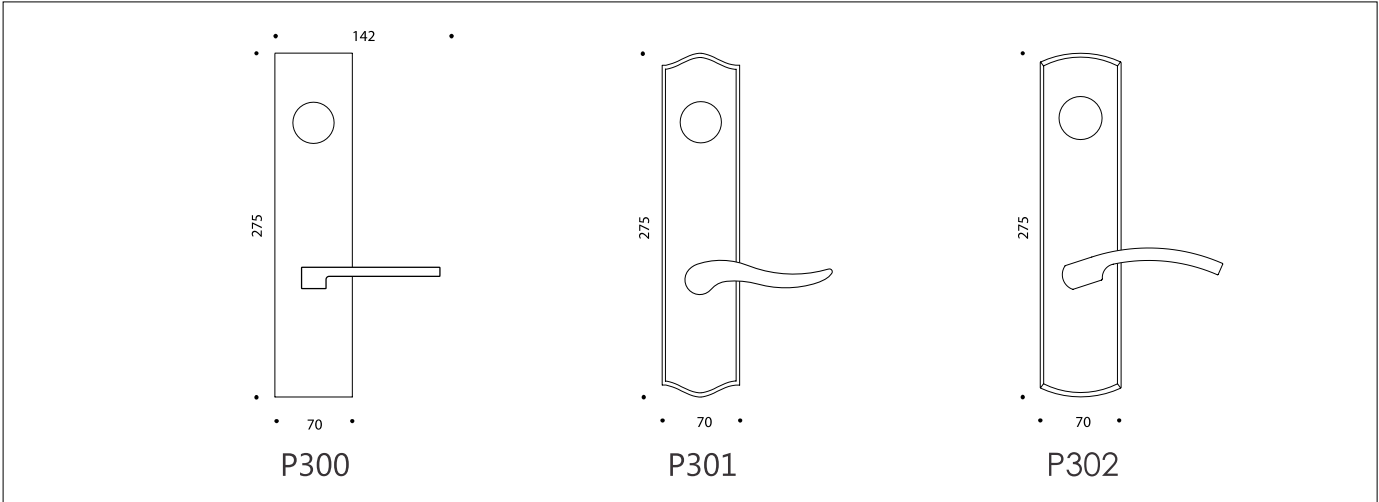
PLEASE NOTE

UL labeled "Fire Cans" must be inserted into both bored holes prior to installation of hardware sets.

Sample Specification
For a "ROBOCINQUE S" 2 3/4" Tubular Inter-connected Keyed Entry - Satin Chrome - Left Hand

Lever	ID71	P300	T151	Satin Chrome	LH
Plate		↑	↑	↑	↑
Function			↑	↑	↑
Finish				↑	↑
Handing					↑

OPTIONAL SUITE ENTRY PLATES

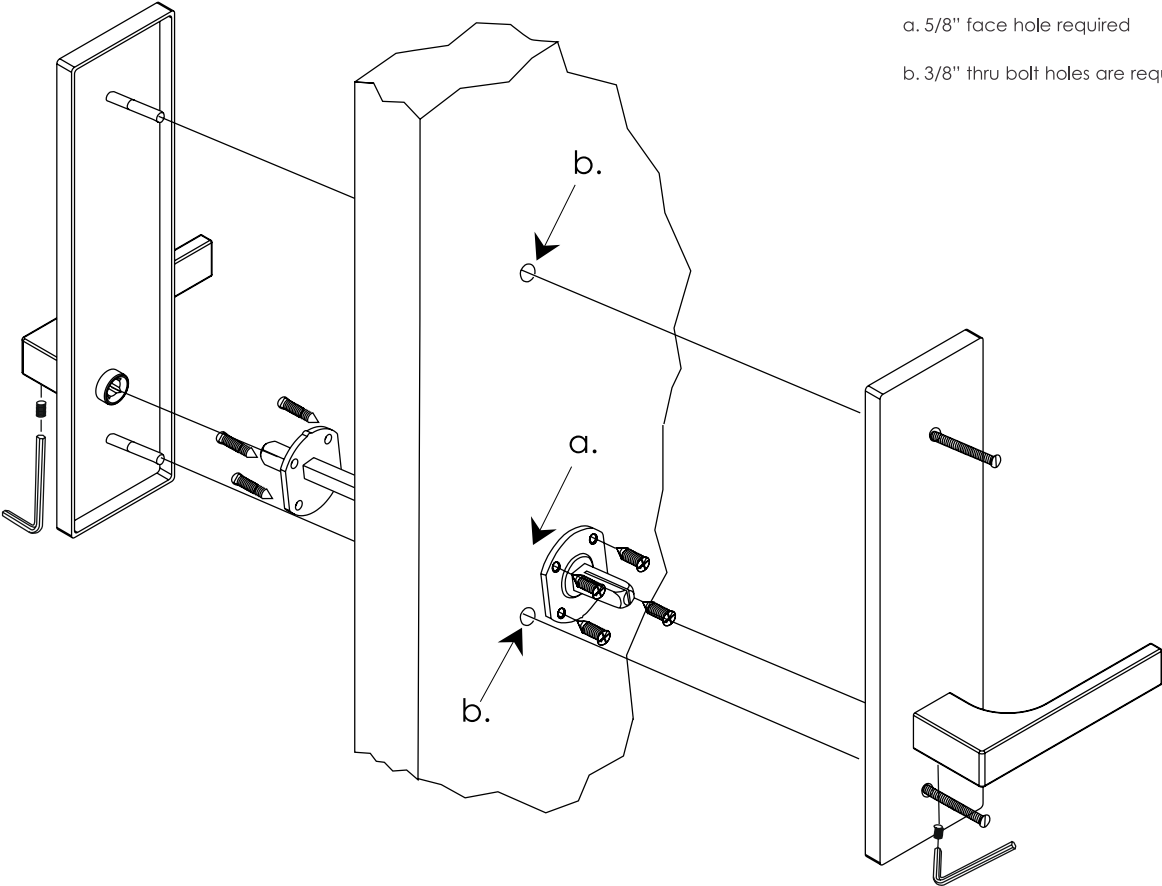


INTER-CONNECTED TUBULAR ENTRY MOUNTING

P300 PLATE SERIES



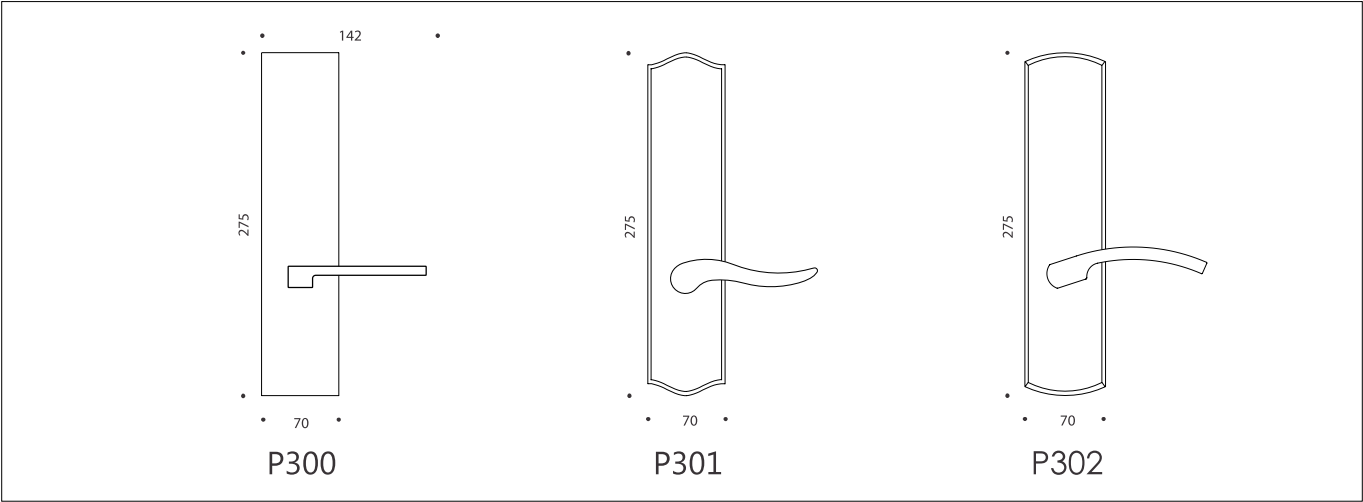
DOUBLE DUMMY D190



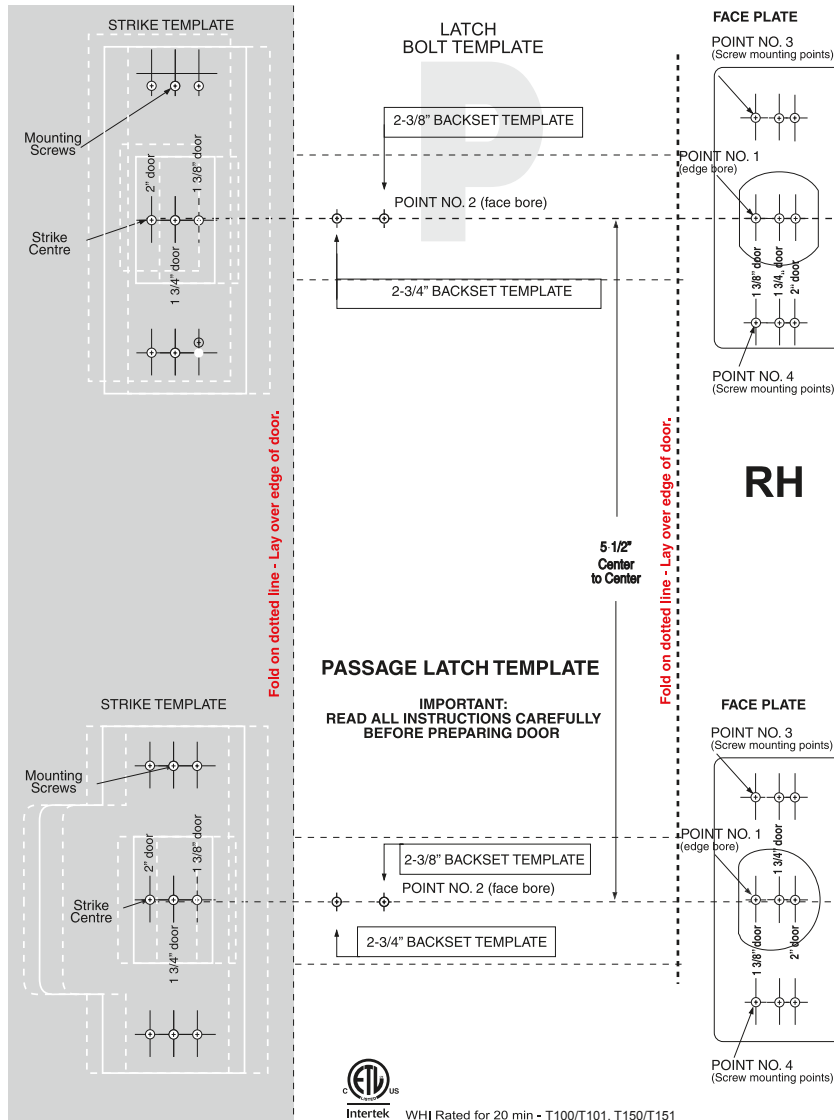
a. 5/8" face hole required

b. 3/8" thru bolt holes are required

OPTIONAL SUITE ENTRY PLATES



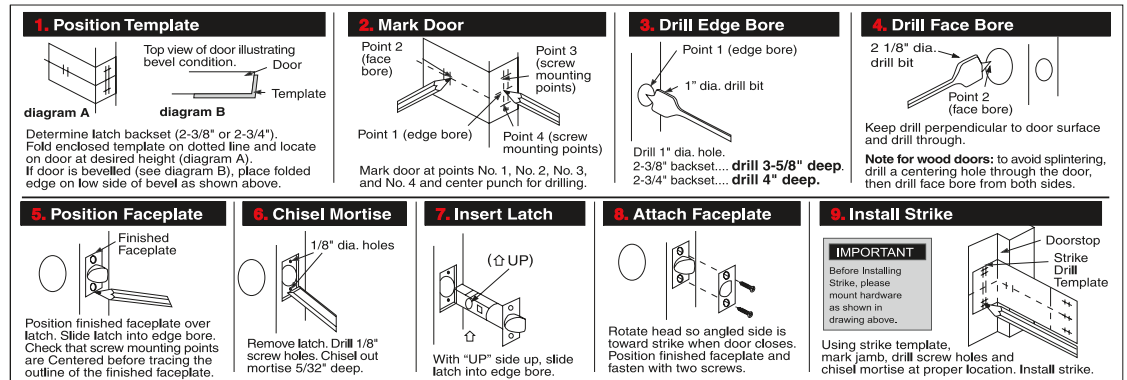
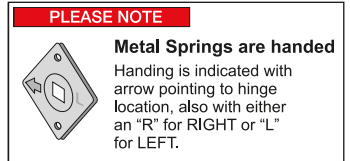
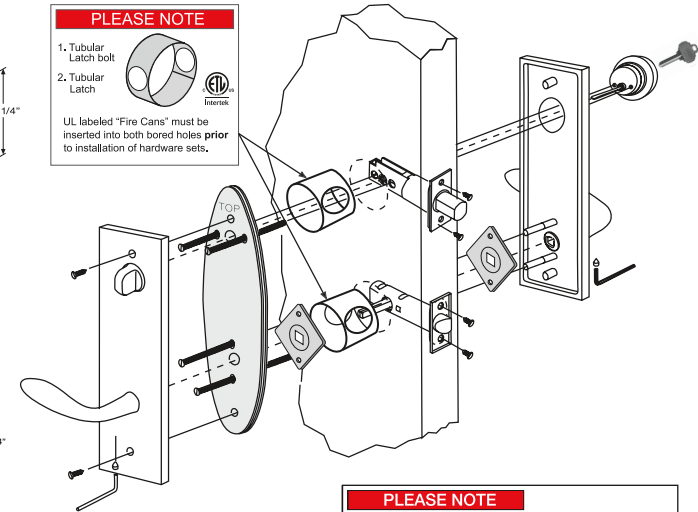
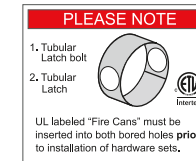
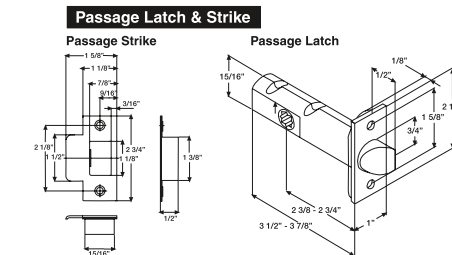
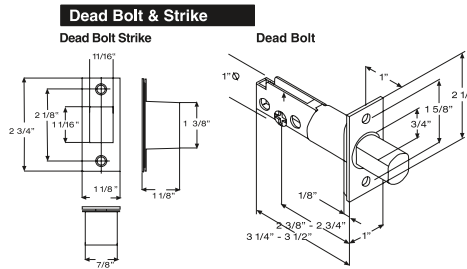
Installation Instructions for ENTRY LOCK P300 - T 150 - T 151 - non-bored door condition



Template # 013 RH
Oct. 2017

TOOLS REQUIRED:

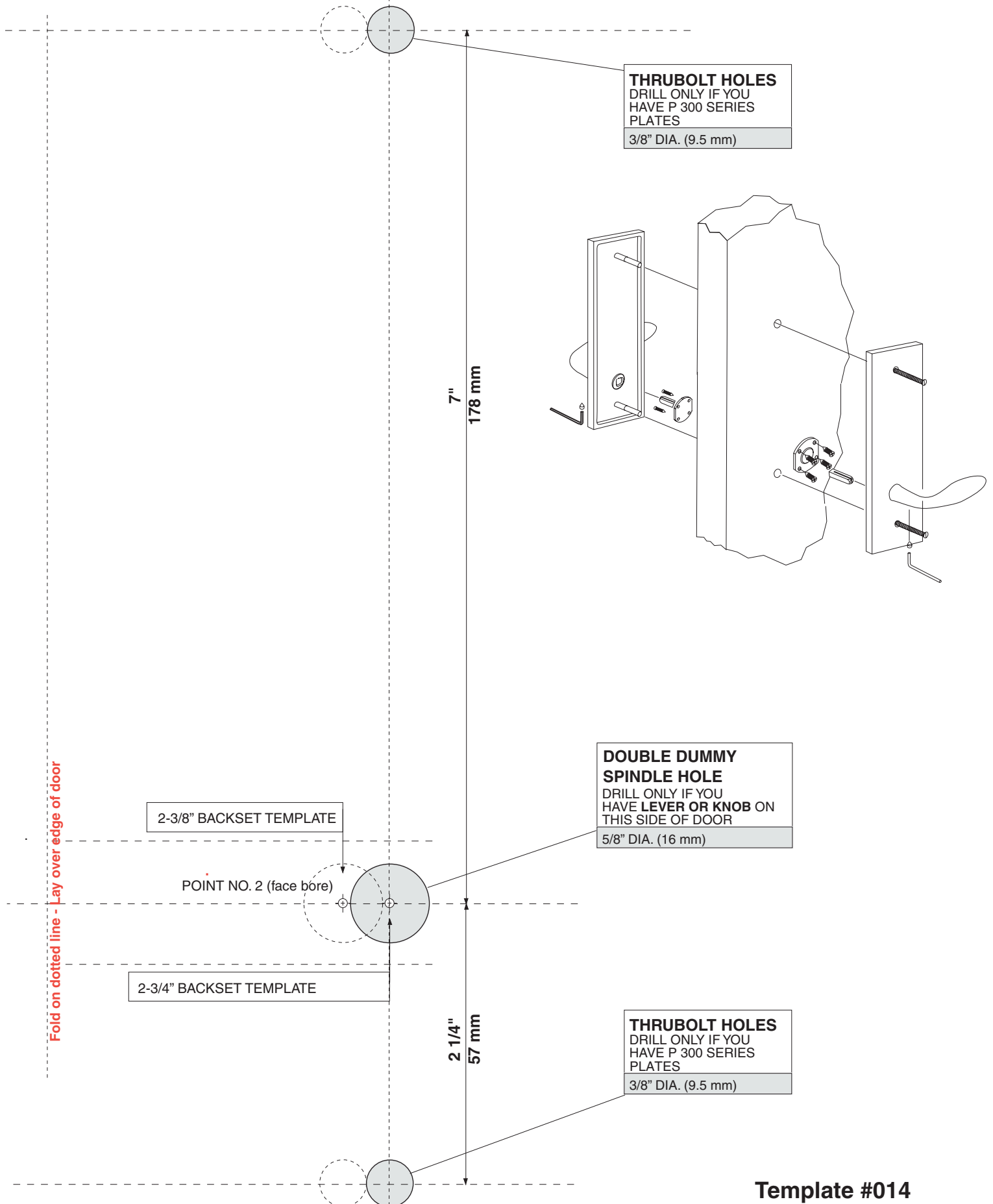
Drill, 1" dia. bit, 2 1/8" dia. bit, 1/8" dia. bit, Center Punch, Chisel, Hammer, Phillips Screwdriver.
BE SURE TO READ ALL INSTRUCTIONS BEFORE PREPARING DOOR.



NOTE: Check to ensure face plate does not restrict free movement of the latch head. Repeat instruction 1-9 for latch bolt. Install trim.

Template for **DOUBLE DUMMY P300 - D190** - non-bored door condition

Template used for both Tubular and Mortise P300 Series plates.



Template #014