

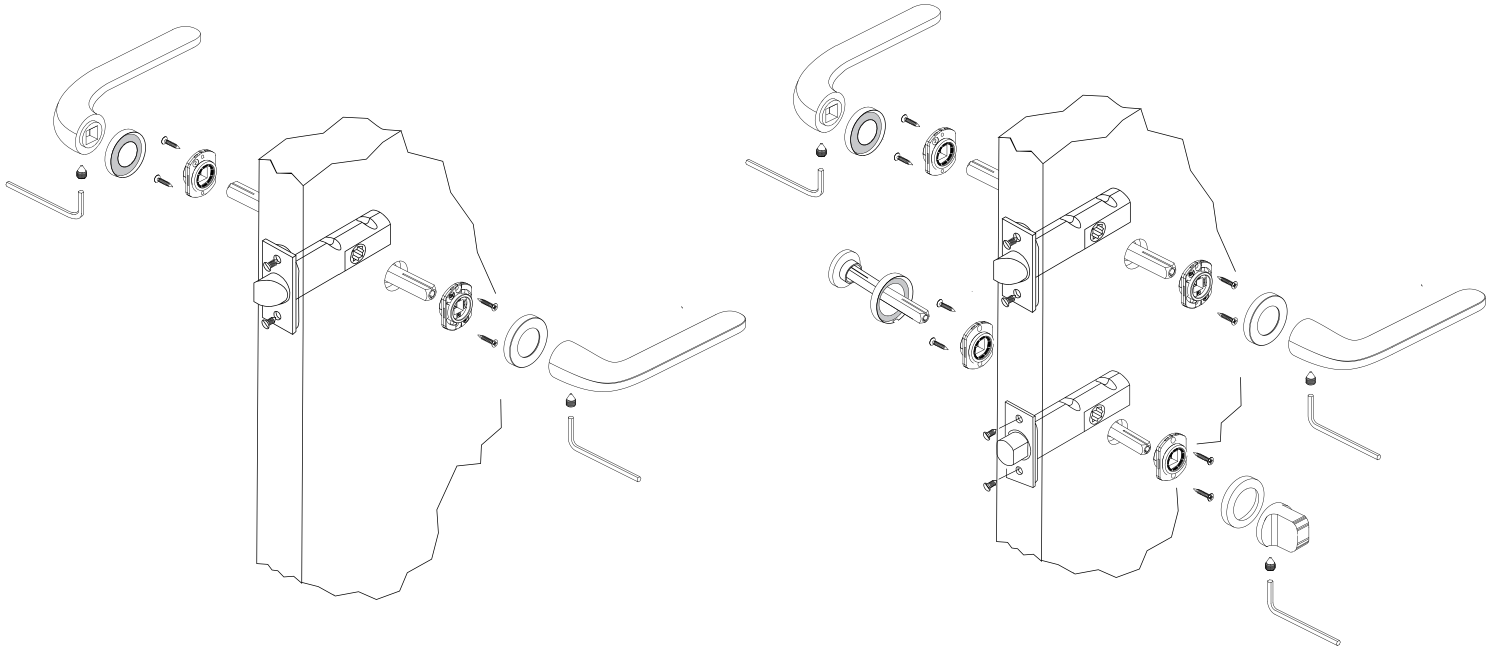
# EUROPEAN TUBULAR MOUNTING

## Z-SERIES - T100 SERIES TUBULAR



PASSAGE T100/T101 2 $\frac{3}{8}$ " OR 2 $\frac{3}{4}$ " BACKSET

PRIVACY T140/T141 2 $\frac{3}{8}$ " OR 2 $\frac{3}{4}$ " BACKSET



### Sample Specification

for a "ROBOQUATTRO" Tubular Privacy 2 $\frac{3}{4}$ " backset

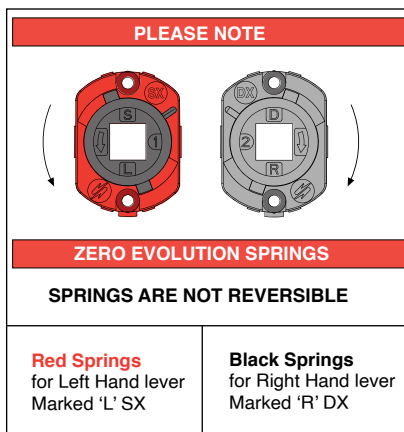
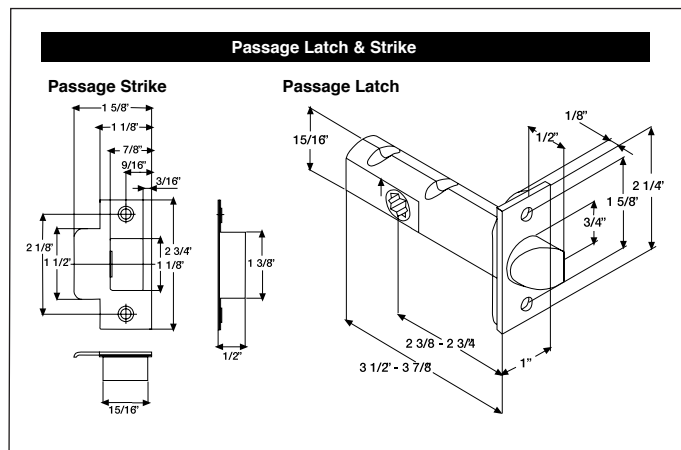
Lever - ID41 Z-T141 - Satin Chrome

Function

Finish

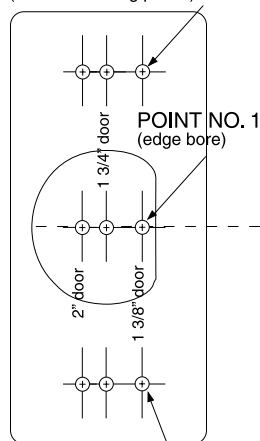
TUBULAR LATCHES AVAILABLE IN 2 $\frac{3}{8}$ " OR 2 $\frac{3}{4}$ " BACKSET.  
THEY ARE NOT ADJUSTABLE.

# Installation Instructions for PASSAGE LOCK Z - T100 - T101 - non-bored door condition



## FACE PLATE

POINT NO. 3  
(Screw mounting points)



Fold on dotted line - Lay over edge of door.

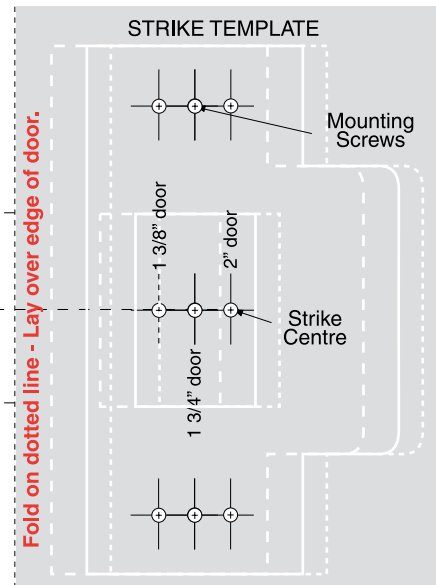
**IMPORTANT:**  
READ ALL INSTRUCTIONS CAREFULLY  
BEFORE PREPARING DOOR

## PASSAGE LATCH TEMPLATE

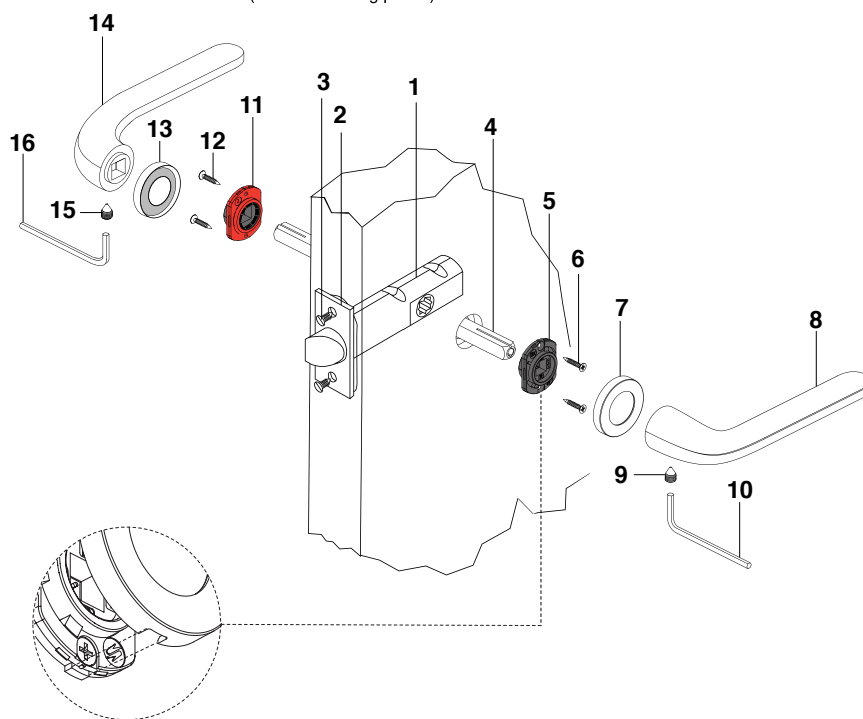
2-3/8" BACKSET TEMPLATE

POINT NO. 2 (face bore)

2-3/4" BACKSET TEMPLATE

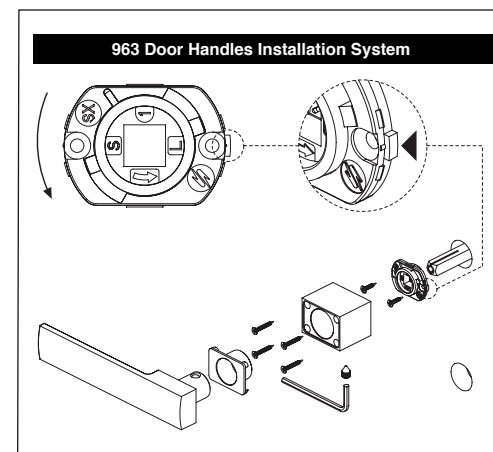


Fold on dotted line - Lay over edge of door.

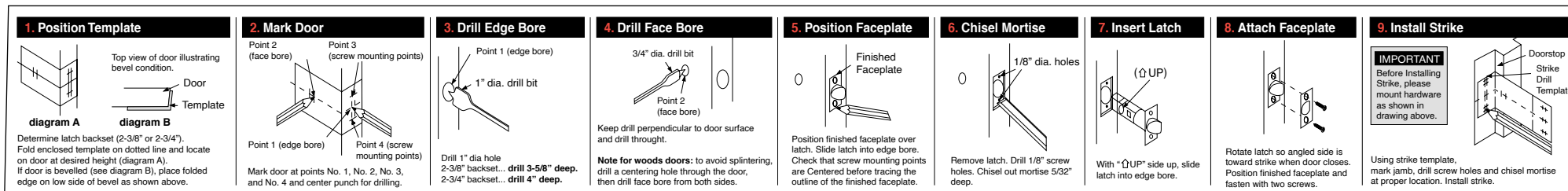


## PASSAGE SET PARTS

1. Passage Latch
2. Latch Face Plate
3. Latch Face Plate Screws
4. Solid Spindle
5. Right Hand Spring. RH "DX" (BLACK)
6. Wood Screws for Spring
7. Zero Evolution Rose
8. Right Hand Lever
9. Lever Set Screw
10. Allen Key for Lever Set Screw
11. Left Hand Spring. LH "SX" (RED)
12. Wood Screws for Spring
13. Zero Evolution Rose
14. Left Hand Lever
15. Lever Set Screw
16. Allen Key for Set Screw



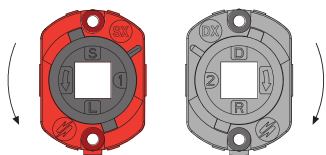
**TOOLS REQUIRED:**  
Drill, 1" dia. bit, 3/4" dia. bit, 1/8" dia. bit, Center Punch, Chisel, Hammer, Phillips Screwdriver.  
**BE SURE TO READ ALL INSTRUCTIONS BEFORE PREPARING DOOR.**



**NOTE:** Check to ensure face plate does not restrict free movement of the latch head. Install trim.

# Installation Instructions for PRIVACY LOCK Z - T140 - T141 - non-bored door condition

## PLEASE NOTE



## ZERO EVOLUTION SPRINGS

### SPRINGS ARE NOT REVERSIBLE

**Red Springs**  
for Left Hand lever  
Marked 'L' SX

**Black Springs**  
for Right Hand lever  
Marked 'R' DX

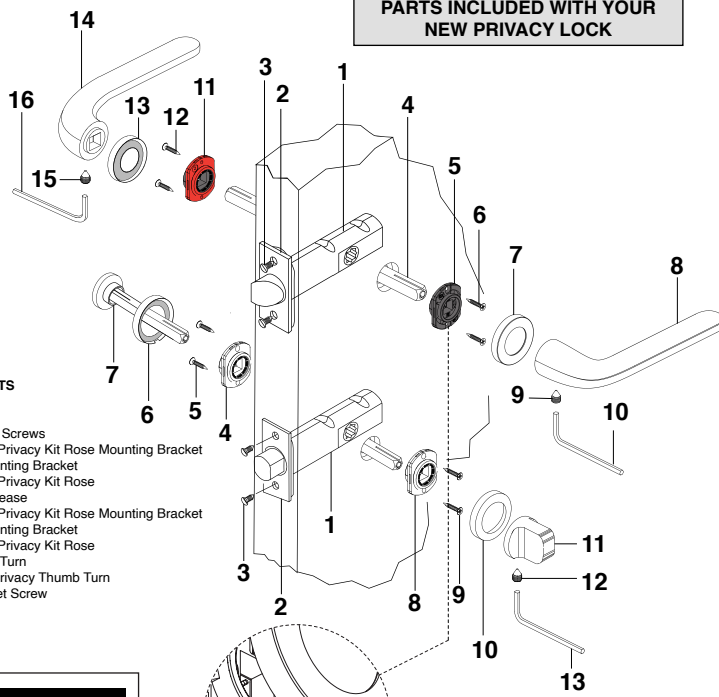
## PRIVACY SET PARTS

1. Passage Latch
2. Latch Face Plate
3. Latch Face Plate Screws
4. Solid Spindle
5. Right Hand Spring, RH "DX" (BLACK)
6. Wood Screws for Spring
7. Zero Evolution Rose
8. Right Hand Lever
9. Lever Set Screw
10. Allen Key for Lever Set Screw
11. Left Hand Spring, LH "SX" (RED)
12. Wood Screws for Spring
13. Zero Evolution Rose
14. Left Hand Lever
15. Lever Set Screw
16. Allen Key for Set Screw

## PRIVACY KIT PARTS

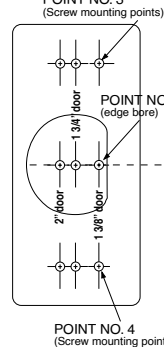
1. Privacy Bolt
2. Bolt Face Plate
3. Bolt Face Plate Screws
4. Zero Evolution Privacy Kit Rose Mounting Bracket
5. Screws for Mounting Bracket
6. Zero Evolution Privacy Kit Rose
7. Emergency Release
8. Zero Evolution Privacy Kit Rose Mounting Bracket
9. Screws for Mounting Bracket
10. Zero Evolution Privacy Kit Rose
11. Privacy Thumb Turn
12. Set Screw for Privacy Thumb Turn
13. Allen Key for Set Screw

## PARTS INCLUDED WITH YOUR NEW PRIVACY LOCK



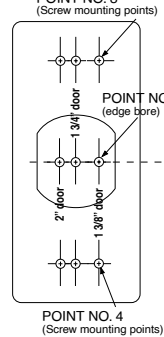
## FACE PLATE

POINT NO. 3  
(Screw mounting points)



## FACE PLATE

POINT NO. 3  
(Screw mounting points)



## PASSAGE LATCH TEMPLATE

**IMPORTANT:**  
READ ALL INSTRUCTIONS CAREFULLY  
BEFORE PREPARING DOOR

2-3/8" BACKSET TEMPLATE

POINT NO. 2 (face bore)

2-3/4" BACKSET TEMPLATE

3-1/2"  
Recommended  
Center  
to Center

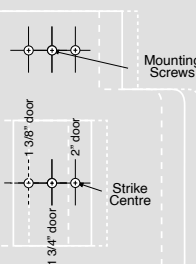
## PRIVACY MORTISE BOLT TEMPLATE

2-3/8" BACKSET TEMPLATE

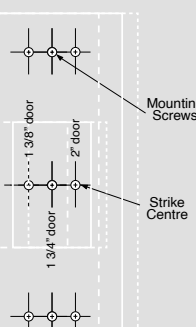
POINT NO. 2 (face bore)

2-3/4" BACKSET TEMPLATE

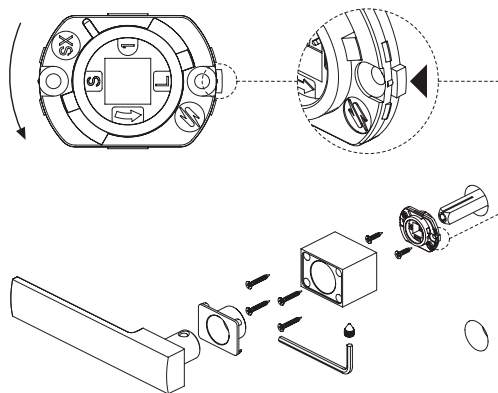
## STRIKE TEMPLATE



## STRIKE TEMPLATE



## 963 Door Handles Installation System

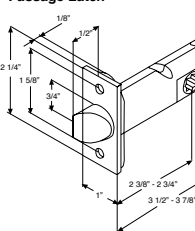


## TOOLS REQUIRED:

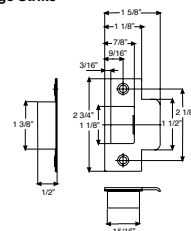
**Drill, 1" dia. bit, 3/4" dia. bit, 1/8" dia. bit, Center  
Punch, Chisel, Hammer, Phillips Screwdriver.  
BE SURE TO READ ALL INSTRUCTIONS  
BEFORE PREPARING DOOR.**

## Passage Latch & Strike

### Passage Latch

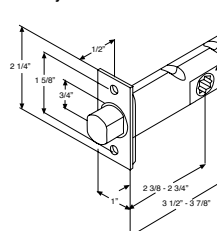


### Passage Strike

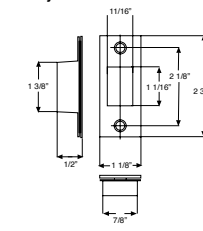


## Privacy Bolt & Strike

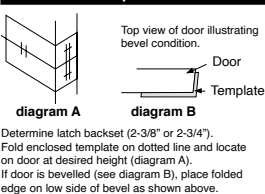
### Privacy Bolt



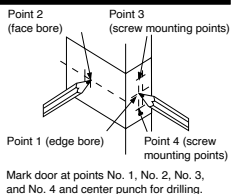
### Privacy Strike



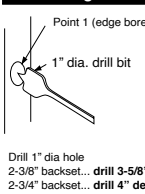
## 1. Position Template



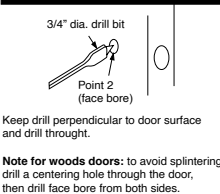
## 2. Mark Door



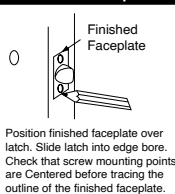
## 3. Drill Edge Bore



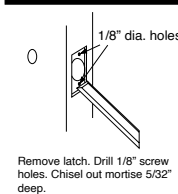
## 4. Drill Face Bore



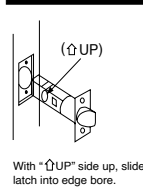
## 5. Position Faceplate



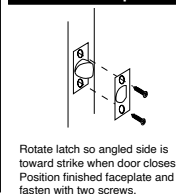
## 6. Chisel Mortise



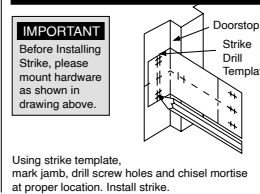
## 7. Insert Latch



## 8. Attach Faceplate



## 9. Install Strike



**NOTE: Check to ensure face plate does not restrict free movement of the latch head. Install trim. Repeat instruction 1-9 for privacy bolt.**