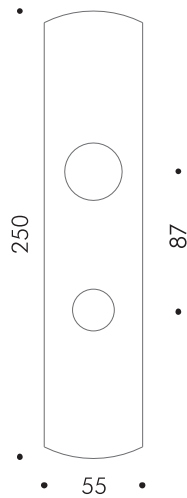


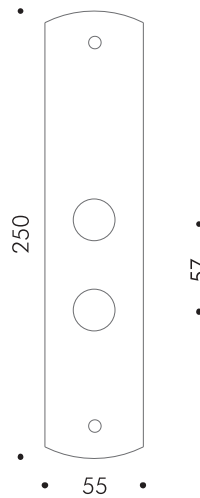
OPTIONAL PLATES | P200 SERIES |
DIMENSIONS



P202 MORTISE



Available finishes:
Polished Chrome
Satin Chrome



Available finishes:
Polished Chrome
Satin Chrome

FUNCTION AVAILABLE

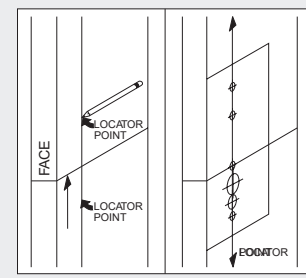
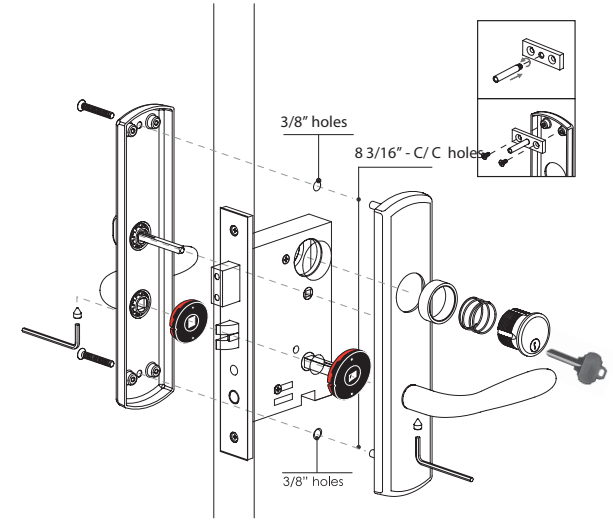
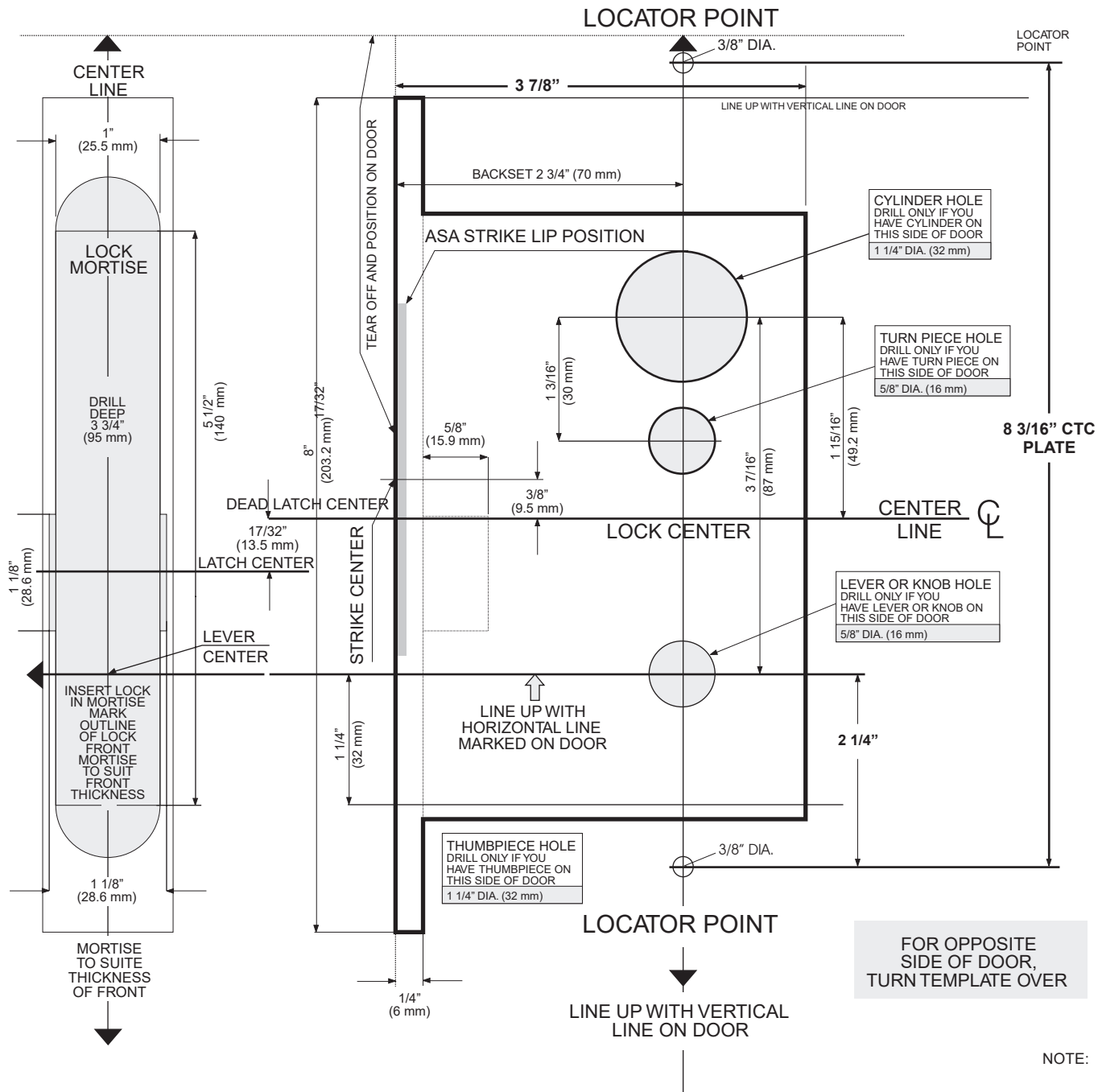
HD NORTH AMERICAN MORTISE - M10 SERIES

PASSAGE M1010 • PRIVACY M1040 • OFFICE M1050 • VESTIBULE M1060 • CLASSROOM M1070
• STOREROOM M1080 • ENTRANCE M1053 • APARTMENT ENTRY M1056



MADE IN ITALY

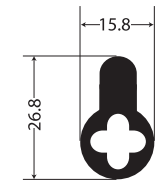
INSTRUCTION AND TEMPLATE FOR INSTALLING P202 MORTISE LOCK WITH 2 3/4" BACKSET



- Mark door and position template on high side of bevel.
- Draw a horizontal line on both sides of door and lock face of door at desired height of lever or knob finished floor line.
- Mark 2 locator points on each side of door above and below horizontal line.
- Draw vertical line through 2 locator points.
- Detach door template and lock face door template.
- Position template on outside of door so horizontal center lines up with horizontal line on door and template locator points line up with vertical line on door.
- Note: If mortise for strike has already been made in metal frame, position templates using strike mortise as reference. (see template)*
- Position lock face template.
 - Mortise and drill door. Drill holes from each side of door.

DOOR PREPARATION CHART

SERIES	OUTSIDE			INSIDE		
	LEVER HOLE	CYLINDER HOLE	TURN KNOB HOLE	LEVER HOLE	CYLINDER HOLE	TURN KNOB HOLE
M10 SERIES						
LOCK FUNCTION	A	B	C	A	B	C
M1010
M1040
M1050
M1053
M1056
M1060
M1070
M1080
M1081
M1085



NOTE: STRAIGHT CAM ONLY IS USED FOR HEAVY DUTY MORTISE